



Hdb2Win

Database Program Release 2.4.2 (1 May 2020)

Application PaleoTax Service Release 15

Application PalCol Service Release 7

Application Oliva Service Release 1

Introduction

This file describes the modifications compared to program release 2.4.1. Please compare also to the documentation files on older program versions. Version 2.4.2 is a small release that encompasses mainly the correction of errors, a better adaptation to larger screen formats, and introduces some more functions of the interpreter. There are more options to show images and a close connection to PaleoTax/Graph.

Hdb2Win

Installation

You will download only one file – hdb242xx.exe – that contains the installation program and all the files you need to work with Hdb2Win and its applications (xx stands for the built). This file includes the database program, the structures of the applications PaleoTax SR15, PalCol SR7, and the new application Oliva SR1, as well as the supporting programs PaleoTax/Graph and PaleoTax/Map.

Application PaleoTax – Database structure and programs to manage taxonomic, geographic, stratigraphic, specimen, and literature data in the palaeontology. The structure is clearly taxon based. Specimens can be recorded but the function is rudimentary.

Application PalCol – Database structure and programs to manage taxonomic, geographic, stratigraphic, and specimen data in the palaeontology. The structure is clearly specimen based and is used to record fossil collections.

Application Oliva – Database structure and programs to manage taxonomic, geographic, specimen, and literature data in the biology. The structure is clearly specimen based and was primarily designed to record extant molluscs. There is a strong emphasis on morphometric data and images, as well as data estimation (facies and size data, geographic distribution).

PaleoTax/Graph – Separate program to create vector images from data analysis and estimation with PaleoTax.

PaleoTax/Map – Separate map program to plot occurrences or localities.

Start the installation program – hdb242xx.exe. You probably should have administrator rights to do so. If you want to work with the application PaleoTax you should at least install „PaleoTax / Database (Hdb2Win)“ and „PaleoTax Structure Files“. Documentation files will not be installed; please download them separately from the manual page (<http://www.paleotax.de/pvn10.htm>). A previously installed version does not require un-installation. If you want to do so, use the functionality of the operating system (Start / Control / Programs) uninstalling former versions. Uninstall removes only the program, but not configuration files stored in 'c:\Users\\AppData\Roaming\Hdb2Win'. Uninstall does not remove your databases. The installation of all Service Releases requires the installation of Hdb2Win 2.4.2 before.

Options

The amount of options is increasing with every new version because users are requesting for multiple changes, new features and new options. Because I do not know whether other users agree with these changes, they are programmed but switched off per default. Users like when the front-end of programmes, in general, the appearance, changes as little as possible from version to version. It can be therefore important to read this chapter since it can be that there is a feature installed that you always desired.

For the options saved in the HDB2WIN.DAT see the Manual provided for version 2.1 and the documentation files on later versions. Here, only new settings are reported. The current number refers to the functions SSYS and GSYS of the interpreter which have access to this values and is shown in the "Extended Options" function in brackets, as well as the INI TO command in the DB2 configuration files. The name of the setting has the form "Module : Name". The module name corresponds to the file card in the "Extended Options" function (see for details below the list).

| | |
|------------------------------------|--|
| 134 Interpreter : FontColour | Font colour in the editor. Can be modified in the editor (options). |
| 135 Interpreter : FontStyle | Font style in the editor. Can be modified in the editor (options). |
| 136 Edit (Font) : SubFieldColorDis | The background of data fields that are connected to other tables but disabled (only to show and to search for, no modification). |

The function to modify these values is behind the button 'Extended Options' which is placed in 'Application library > Options > Tools'. The function opens a edit form with several cards, each for every group (module) of options. The small number in brackets corresponds to the consecutive option number. Just modify the values and press F12 or click on Save. Be careful modifying values; do not pass the indicated ranges. The program does not check anything. Any catastrophic changes can be undone by deleting the file HDB2WIN.DAT in the 'c:\Documents and Settings\<username>\ Application data\Hdb2Win' folder (Windows XP) or 'c:\Users\<username>\AppData\Roaming\Hdb2Win' folder (Windows 7/8/10).

Registry

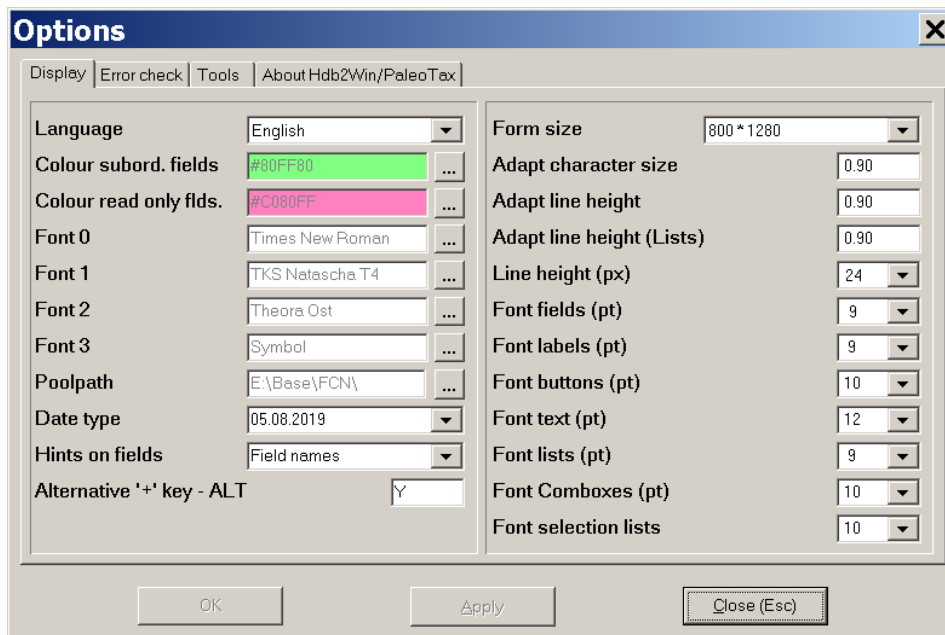
From version 2.4.2 on, Hdb2Win has its own registry. The registry helps to keep values specifically used in programs of the applications. So, user defined settings are conserved and can be recalled when necessary. The registry is completely controlled through commands of the interpreter. The registry data are stored in 'c:\Documents and Settings\<username>\ Application data\Hdb2Win\Hdb2WinRegistry.txt' (Windows XP) or 'c:\Users\<username>\AppData\Roaming\Hdb2Win\Hdb2WinRegistry.txt' (Windows 7/8/10).

New functions

Some functions of PaleoTax/Graph can now be called from the interpreter. Please compare to the updated detailed description of the interpreter that is available as PDF file (IP-2.pdf) from the manual page.

Data output

- Data fields that are connected to another table and that are disabled, are now marked with another colour. This colour can be modified in the options ("SubFieldColorDis").



Images

The display of images has received a new function. Driven by the interpreter, selected images are shown in a type of album. For the moment, this function is per default only included in the Oliva application. For details see the interpreter manual.

Interpreter

The Hdb2Win Interpreter was substantially improved and has numerous new functions. Please compare to the updated detailed description of the interpreter (IP-2.pdf).

Applications

Application PaleoTax

Service Release 15 has only some cosmetic changes but no important modifications. With newer versions of the operating system it became more difficult to analyse data because the internal data analysis module does not work anymore properly. So in the future, more functions of PaleoTax/Graph will be included in the interpreter and the data analysis will be included into PaleoTax in a different way. Users are also requested to propose analysis that are important for them.

Application PalCol

The application has been completely redesigned. First of all, the taxonomy returned to the main table to make queries more easy. Second, search options have been substantially increased. The minimal version is not supported anymore (contact the support). See the new manual (PCLSR7.pdf; only in German).

New application Oliva

The new application was designed for collection (and observations) of extant marine organisms. The structure is described in a separate manual (Oliva-1.pdf). For the moment, *Oliva* is the most advanced application since it offers multiple data analysis tools directly in the data acquisition forms. There is a strong connection between the application and PaleoTax/Graph.

Miscellaneous

- The function key F2 to insert a special symbol can be used in the search mask when formulating a condition.

Service Release

As always, it is recommended to make backup copies of your database before applying a Service Release, even if there is only a small amount of changes in the database sensu stricto. You will find the program SR15.PRF (for PaleoTax) in the folder 'c:\Documents and Settings\\Documents\Hdb2Win\PTX_SR15' (Windows XP) or 'c:\Users\\Documents\Hdb2Win\PTX_SR15' (newer Windows versions) and SR7.PRF (for PalCol) in the folder 'c:\Documents and Settings\\Documents\Hdb2Win\PCL_SR7' (Windows XP) or 'c:\Users\\Documents\Hdb2Win\PCL_SR7' (newer Windows versions). Load the file, start it, read carefully the instructions and answer properly the questions.

See also the separate file SR.PDF (in English and German). User, who have installed Hdb2Win version 2.4.2 for the first time **do not need to do anything** since their structure is already on the level of PaleoTax SR15. The same applies to PalCol SR7.

Additional Information

- The printed manual for Hdb2Win version 2.1 is still valid for PaleoTax versions 2.2 up to 2.4. There are not too many changes since then, and practical everything new is documented in the PDFs on following program versions. Read the manual. Check the F.A.Q. Both answer most questions.
- The following documents were published after the printed manual:
 - info220.pdf
 - info221.pdf
 - info222.pdf
 - info23.pdf
 - info231.pdf
 - info232.pdf
 - info24.pdf
 - info241.pdf
 - info242.pdf (this file)

An extensive description of the Interpreter is provided in IP-2.pdf.

An instruction how to create new applications is available since version 2.4 (CB-11.PDF).

- Advice, wishes and comments are always welcome, also if I cannot realise them on the spot. They are not forgotten, but sometimes they demand structural or conceptual changes. Some are impossible to realise.